



NORTHAMPTON INTERNATIONAL ACADEMY

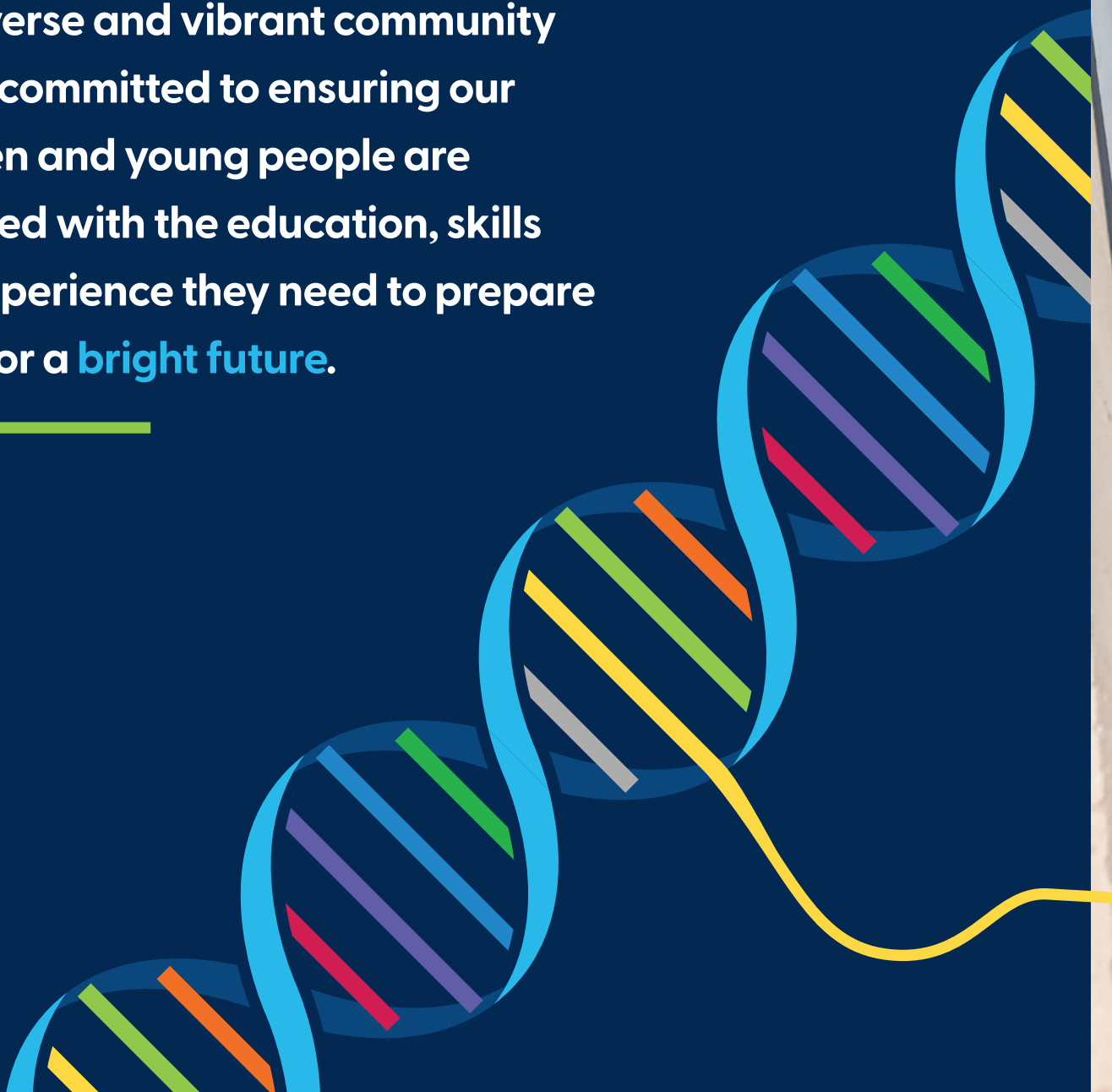
Secondary
Phase
Prospectus






WELCOME

Northampton International Academy
is a diverse and vibrant community
that is committed to ensuring our
children and young people are
provided with the education, skills
and experience they need to prepare
them for a **bright future.**





The school is based in the heart of Northampton and has a strong bond with the local community outside its walls and a warm sense of community within them with staff, parents and governors all working in partnership to ensure the very best outcomes for our pupils.

As a local school with a global vision, we strive to ensure that our pupils understand the wider world and how education can help them to access local, national and international opportunities and experiences.

This is an all-through school, so we are well-placed to understand the journey from early years right through to sixth form. We work hard to make sure that every pupil is known, supported and challenged as an individual and that the East Midlands Academy Trust's values of inclusion, innovation and impact are tangible in all aspects of academy life.

We were rated Good overall in our recent Ofsted inspection, demonstrating our rapid and sustainable improvement. We are committed to transforming lives... We are committed to transforming lives, opportunities and the futures of the children and young people at NIA as they move through all stages of their education.

VISION

As part of our united community, our all-through school celebrates the **uniqueness and **diversity** of individuals so that all can flourish and thrive.**

We strive to be the school of choice in Northampton, a school that provides a world-class education for pupils, where children and adults thrive and actively take part in building a community based on high aspirations.

Opportunities are created through challenge to develop a life-long love of learning. We raise aspiration by harnessing passion, promoting engagement and striving for excellence.

Our outward-facing approach prepares our community for success in the modern world and our ethos prepares our students for life in modern Britain. The school's culture strongly supports the promotion of values such as tolerance, respect, democracy and the rule of law.

Our aim is for every pupil to access a wide range of opportunities in order to develop their full potential.



**Leadership and
Management – Ofsted
rated GOOD (2024)**

Ofsted said:
“The school has improved
rapidly under strong and
determined leadership”

Northampton International Academy – a local school with a global vision



Martin Serráo Executive headteacher



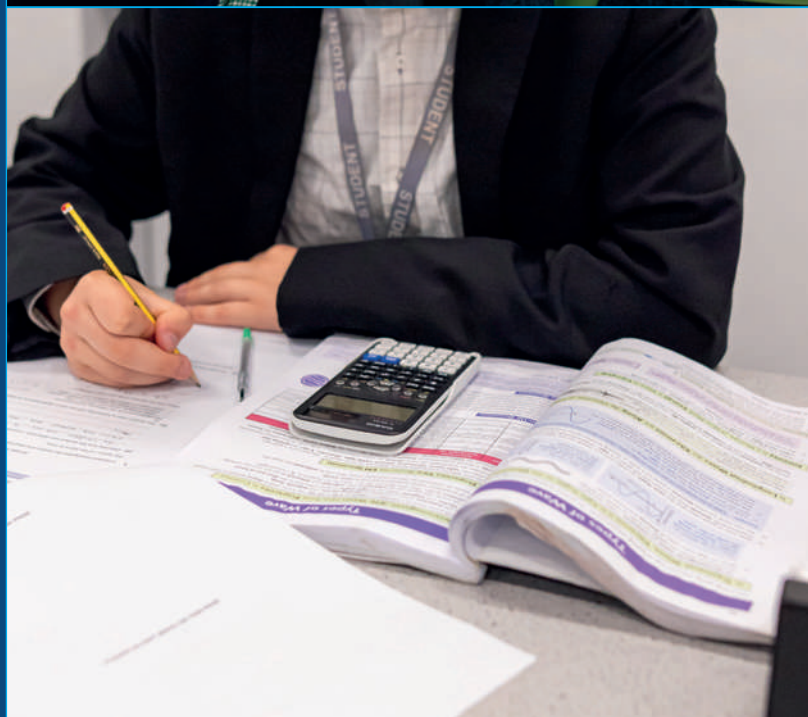
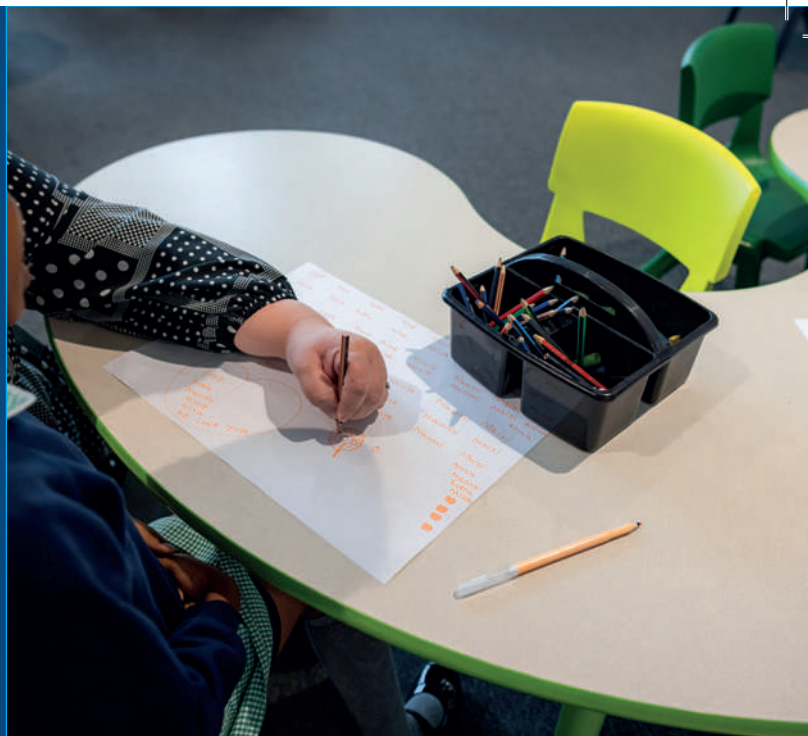
SEND STATEMENT OF INTENT

We are **committed** to providing an appropriate and high-quality education to all the children living in our local area. We believe that **all children**, including those identified as having special educational needs and disabilities, have a common entitlement to a broad and balanced academic and social curriculum that is accessible to them, and to be **fully included in all aspects of academy life**.

In line with the fundamental ethos and values of East Midlands Academy Trust and the aspirations of Northamptonshire Children's Trust, our intent for SEND provision at Northampton International Academy is:

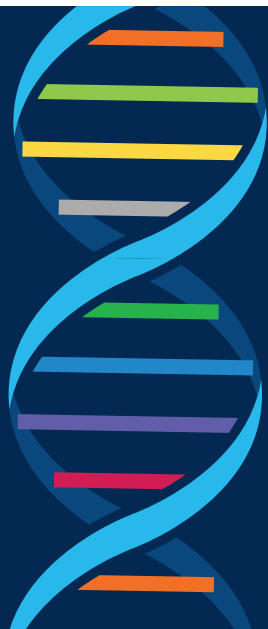
- To ensure that every child and young person with SEND makes excellent progress, through access to high-quality provision within an inclusive all-through setting.
- To instil in every child and young person the DNA values of Collaboration, Respect and Excellence, which are the building blocks of learning at NIA.
- To engage with children, young people and their families to promote early identification and provide high-quality support that meets their specific needs.
- To collaborate on high-quality and impactful multi-agency assessments and quality of plans for those who require specialist levels of support.
- To tailor our whole-school curriculum offer to enhance opportunities for our young people with SEND.
- To develop smooth transition through each key stage and progression to adulthood for all young people with SEND.

We have a graduated approach to SEND, ensuring early identification of needs and a continuum of support for children in order to enable them to make progress from early years through secondary, to post-16.



CURRICULUM





We provide pupils with a broad, balanced and inclusive curriculum, which is ambitious and designed to give learners, particularly those with special educational needs and the most vulnerable, the knowledge and cultural capital they need to succeed in life.

Behaviour and Attitudes – Ofsted rated GOOD (2024)

Ofsted said:

“Pupils proudly meet the very high expectations that the school has of their behaviour”

Learners are encouraged and supported to achieve their full potential and to be included in the social and academic life of the school. The curriculum is coherently planned and sequenced to enable learners to build constantly on their prior learning, whilst developing and deepening their understanding. Our approach combines concepts from the forefront of educational research so that teachers design learning opportunities that maximise outcomes for learners.

Learners will be provided with the opportunities to acquire an increasing array of broader skills, including critical thinking, resilience, working with others, problem solving and leadership. These attributes prepare them to be successful in their future learning and employment within the community.

All learners study the full curriculum based on the National Curriculum. In the rare exception where this is not practical, learners are provided with a bespoke pathway.

In addition to our delivery of subject-based curriculum, we also have character education, which has been introduced from reception to sixth form. This character curriculum helps to prepare children for their future learning and adult lives and complements our subject curriculum and House system.

SCHOOL DAY

Behaviour and Attitudes – Ofsted rated **GOOD** (2024)

Ofsted said:
“Pupils feel safe at
the school and trust
staff to look after them”

8.30	Tutor Time
9am – 10.40am	Period 1
10.40am – 11.10am	Break
11.10am – 12.50pm	Period 2
12.50pm – 1.20pm	Lunch
1.20pm – 3pm	Period 3
3pm	End of Day



100-MINUTE LESSONS

At NIA, we understand and celebrate our unique position to deliver an aspirational broad and knowledge-rich curriculum enabling us to meet all the needs of our students.

We do this by allowing our students the opportunity to engage in three 100-minute lessons a day where we can secure knowledge and enhance the learning experience through a clear sequenced curriculum that builds on prior knowledge to immerse our students fully into their learning.

In our 100-minute lessons, we are able to secure the knowledge from before, dig deeper into the content, whilst being able to assess effectively in the moment to give our students what they need to achieve excellence. Knowledge is built upon each year, giving our students the very best access to key stage 4 GCSE courses.

Our 100-minute lessons enables students to take responsibility for individual learning whilst allowing our staff to work in collaboration with them to ensure every child can be the best they can be.



HOUSE SYSTEM

The intent of the House system is to embed the DNA of NIA values of Collaboration, Respect and Excellence.

By being a member of the House family, students and staff are encouraged to show the character drivers of NIA, which is acknowledged through their specific tie. Each year group is equally divided into six Houses, with two tutor groups per year in each House.

There are many opportunities for our learners to represent their House in events throughout the year from all areas of school life. This blend ensures that everyone has an opportunity to contribute to their House in something that they enjoy or are willing to try, including various sporting activities, NIA's Got Talent, Eurovision, dance, fashion, spelling bees, orienteering and more.

These events will be supported by House points being awarded alongside our rewards that are celebrated throughout the year, leading to an overall winning House every year!



Ruby





Sapphire



Diamond



Emerald



Amethyst



Amber



ENRICHMENT OPPORTUNITIES



At NIA, we enhance the 'traditional' curriculum with enrichment opportunities for all from Reception to Year 13.

There is a comprehensive choice of extracurricular activities to choose from including music, drama, science, a wide range of sports such as football, fitness, basketball, netball, handball, trampolining and games, and much more. We also offer enrichment trips and visits, workshops, speakers and excursions.



PASTORAL SUPPORT

We invest strongly in the care, welfare and happiness of our community. To ensure the very best support and care, we have adopted a year group model that creates a sense of family and belonging.

Each year group has a dedicated Head of Year who supports students both pastorally and academically. The Heads of Year are ably supported and assisted by a non-teaching Pastoral Leader who are available to both students and parents/carers throughout the day.

We have an excellent team of Form Tutors to support students to make good progress in their lessons and also help to foster a sense of family. Each form will be assigned in to one of our six Houses of Ruby, Sapphire, Diamond, Emerald, Amethyst or Amber.



**Personal
Development - Ofsted
rated: GOOD (2024)**

Ofsted said:
“The PSHE curriculum
prepares pupils well for their
next steps in education
and beyond”



NIA is committed to safeguarding and promoting the welfare of children and young people, and expects everyone involved with the school to share this commitment.

We recognise our moral and statutory responsibility to safeguard and promote the welfare of children and young people in our care. We endeavour to provide a safe and welcoming environment where everyone is respected and valued.

We are alert to the signs of abuse, neglect, exploitation and radicalisation, and follow our procedures to ensure that children receive support, protection and justice. Where there are concerns, we have a duty to refer those concerns, contributing to the assessment of a child's needs and towards ongoing actions to meet those needs.

STUDENT WELFARE





Northampton International Academy is part of the **East Midlands Academy Trust**, which currently has seven schools across Northamptonshire and Milton Keynes: one all-through school, one secondary school and five primary schools.





VISION, VALUES AND PURPOSE

The East Midlands Academy Trust is driven by a strong moral purpose that every child has the right to outstanding teaching and leadership.

It is our mission to work with our children, their parents and carers, and our staff to create excellent schools. Schools that demonstrate integrity of purpose through high aspiration for every child.

We set high expectations for our leaders and teachers to support and stretch every child. We ensure that they make excellent progress and build the skills, knowledge and attributes that will prepare them well for the next stage in their life.

‘Every child deserves to be the best they can be.’

www.emat.uk



**NORTHAMPTON
INTERNATIONAL
ACADEMY**

55 Barrack Road
Northampton
NN1 1AA



**NIA6
SIXTH FORM**

Elgin House
Billing Road
Northampton
NN1 5AU

01604 212811 • info@nia.emat.uk • nia.emat.uk